



Rail & Spa! Arima Onsen Taikou-no-yu Package Tickets

Hankyu Ver.
Hanshin Ver.

Enjoy Arima Onsen, Japan's oldest celebrated spa!
Great value packages, including admission for a rich range of bathing at Taikou-no-yu,
along with rail access to Arima Onsen!

Exclusive for Overseas Tourists!

2015 version
Valid: Apr 1, 2015- Jan 17, 2016

Not valid for use: Jan. 1 (Thu, national holiday) – Jan. 3 (Sat), 2015
Spa facilities closed: Jan. 14 (Wed), 2015
(Apr. 2015 closure dates pending)

Choose between **Hankyu Ver.** and **Hanshin Ver.**.
Unlimited one-day passes on either railway.

Prices as of October 1, 2014

 Hankyu Ver. (Adults Only) Roundtrip from Kawaramachi (on weekends/holidays) ¥5,260 Roundtrip from Hankyu Umeda (on weekends/holidays) ¥4,620 ¥2,700 ¥2,560 savings ¥1,920 savings	Hankyu All lines Osaka/Kyoto Area – Kobe · Shinkaiichi	+ Kobe Electric Railway Shinkaiichi – Arima Onsen + Arima Onsen Taikou-no-yu admission ticket
 Hanshin Ver. (Adults Only) Roundtrip from Osaka-Namba (on weekends/holidays) ¥4,800 ¥2,500 ¥2,300 savings	Hanshin All lines Namba/Osaka Area – Kobe · Shinkaiichi	

Access

- Hankyu Railway
- Hanshin Electric Railway
- Kobe Electric Railway (Shared route)

Approx. 7-minute walk from Arima-Onsen Station

- Travel time to Arima-Onsen Station**
- From Umeda : Approx. 80 minutes
 - From Osaka-Namba: Approx. 100 minutes
 - From Kawaramachi: Approx. 120 minutes
 - From Kobe-Sannomiya: Approx. 50 minutes



Where to Purchase

- Overseas travel agencies
- Kansai International Airport Travel Desk
- Hankyu Tourist Center, Osaka-Umeda (Hankyu Umeda Station)
- Hankyu Tourist Information Center, Kyoto (Hankyu Kawaramachi Station) [Hankyu Ver. only]
- Hanshin Electric Railway Service Center (Hanshin Kobe-Sannomiya Station) [Hanshin Ver. only]

歴史探訪
有馬温泉
大浴場

Arima Onsen Taikou-no-yu

Hours: 10:00 a.m. – 11:00 p.m. (last admission 10:00 p.m.)

Open-Air Bath Zone

Take pleasure in the "Taikou Rock Bath" where the free-flowing hot spring waters of the Kinsen "Gold Spa" have been restored for the first time in 411 years, the Ginsen "Silver Spa," a carbonated spring (man-made), and herbal bathing. Also captivating is the luxurious open-air stone sauna and footbath, offering the delights of Japan's first "bedrock bathing and footbath" at the very same time!



Kinsen and Ginsen Steam Bath Stone Sauna Zone

This steam bath stone sauna, where both Kinsen and Ginsen spa waters are transformed into steam flows is truly unique to Taikou-no-yu. Donning the special stone sauna robes, both genders can relax together.



Twenty-six different types of baths and "bedrock bathing"—a facility to savor the Kinsen (Gold) and Ginsen (Silver) waters that make Arima Onsen so special.

G Kinsen:

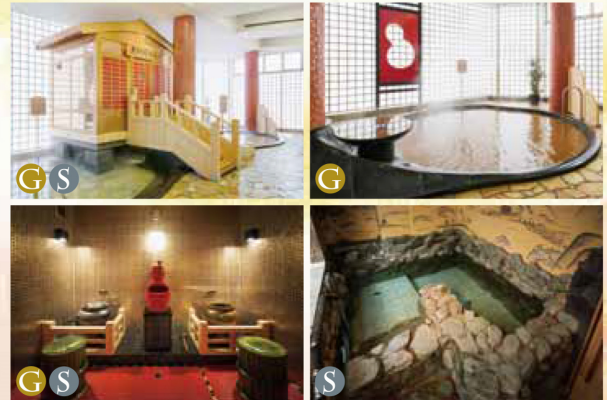
Darkish-red spa waters rich in iron content. High in thermal insulation and moisturizing effects, with wide-ranging therapeutic properties.

S Ginsen:

In direct contrast to Kinsen, the waters here are silky and translucent. Effects include accelerated metabolism and stimulated appetite.

Grand Bath Zone

A Japan first! Showcasing the "Golden Steam Bath," where you can simultaneously enjoy the steam from both the Kinsen and Ginsen spring sources.

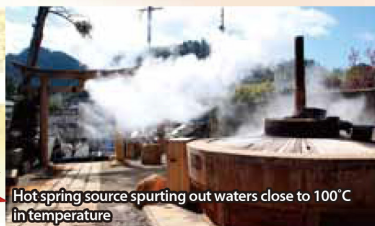


Dining and Shopping

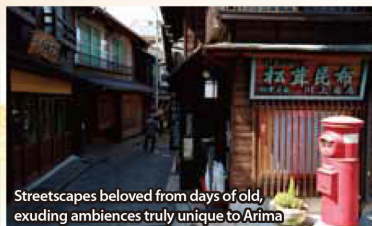
The complex contains restaurants, a food court and other dining facilities, together with an amusement arcade, concession stands, a lounge with reclining sofas, and other outstanding guest amenities.



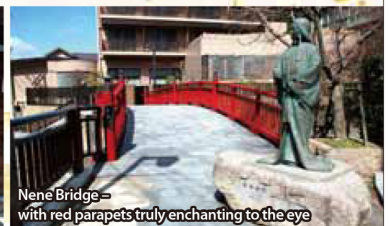
About
the Arima
Onsen



Hot spring source spurting out waters close to 100°C in temperature



Streetscapes beloved from days of old, exuding ambiances truly unique to Arima



Nene Bridge with red parapets truly enchanting to the eye



Information on the Osaka, Kyoto and Kobe areas is also available on the following website:

<http://www.kansai360.net>